

CENTRAL CITY PUBLIC SCHOOLS

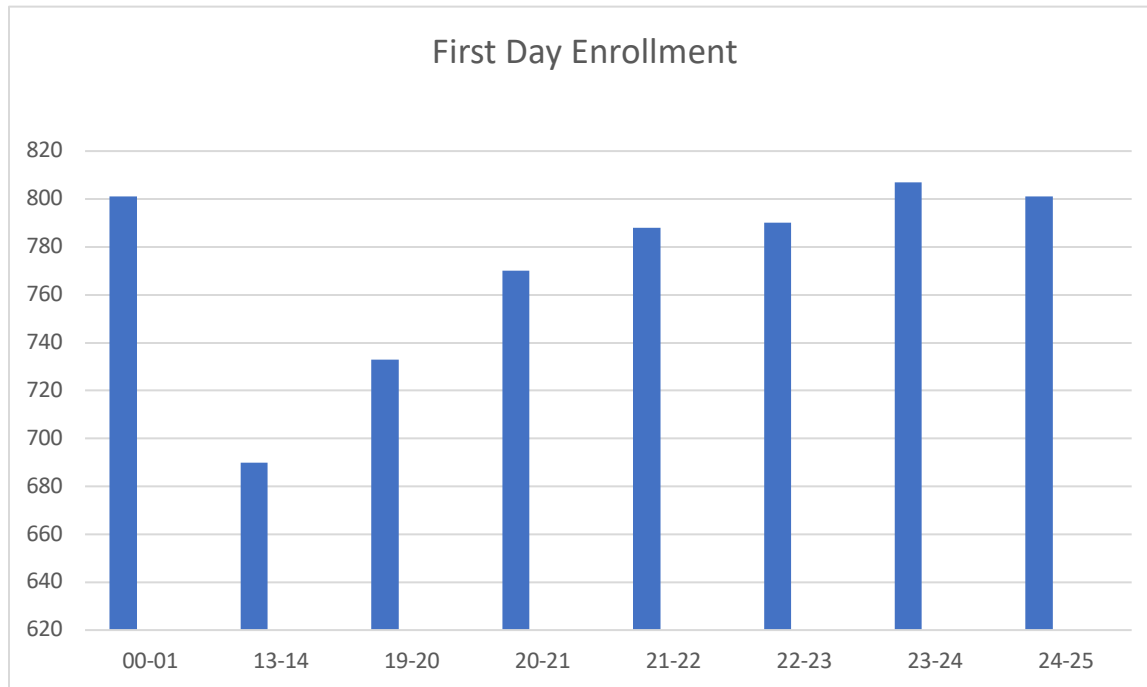


2024-2025 ANNUAL REPORT

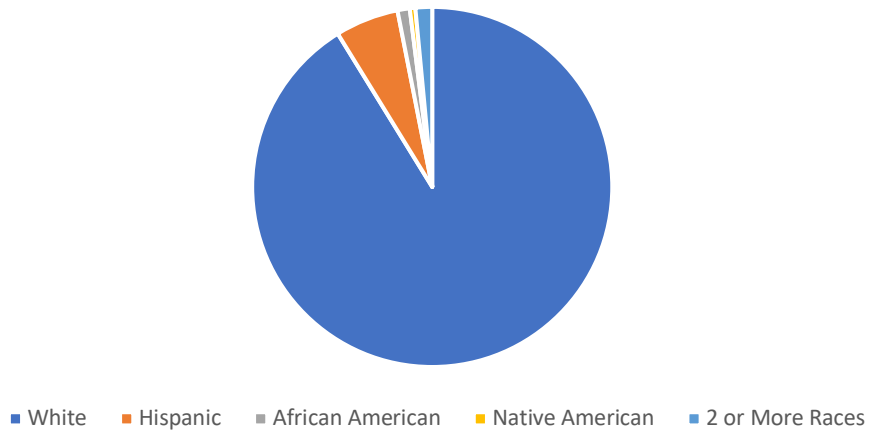
SCHOOL YEAR HIGHLIGHTS

- District Rated as Excellent
- Senior Class ACT average of 21.2
- Met Goal For Every MAP Assessment Sub-Score (27 of 27)
- 3rd Place at State Quiz Bowl
- Band Superior Ranking 1st Time since 2014
- National Qualifiers in Business, FFA, DECA, Science, & SkillsUSA
- Softball & Girls Basketball one Win From State
- Individual Qualifiers in Cross Country, Wrestling, Track, & Golf
- Individual Medalists in Wrestling, Track, & Golf
- Individual Champions in Wrestling & Track
- Boys Wrestling 5th In Dual Team and 5th Individual Team Score
- Baseball State Runner-Up
- Football State Runner-Up

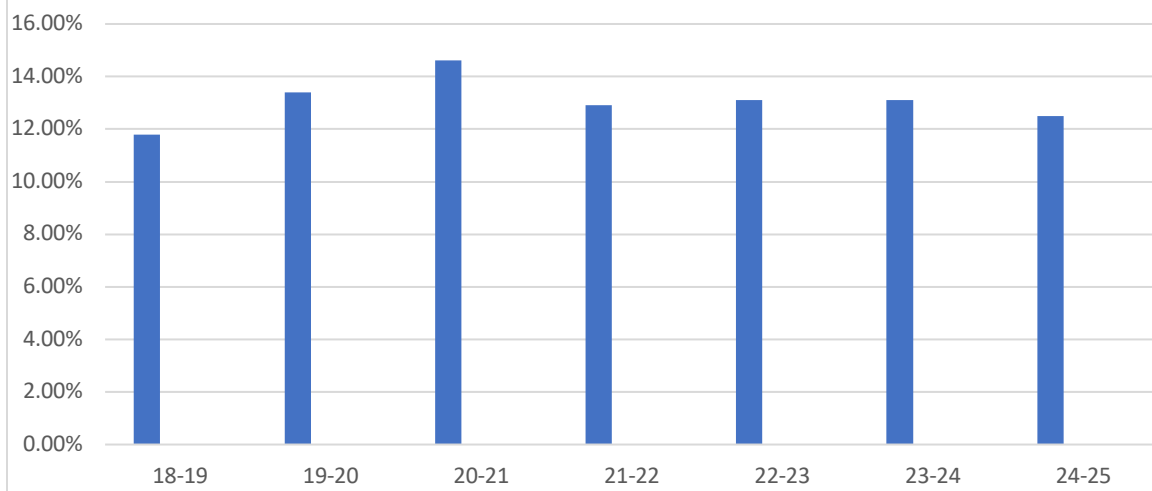
STUDENT DEMOGRAPHICS



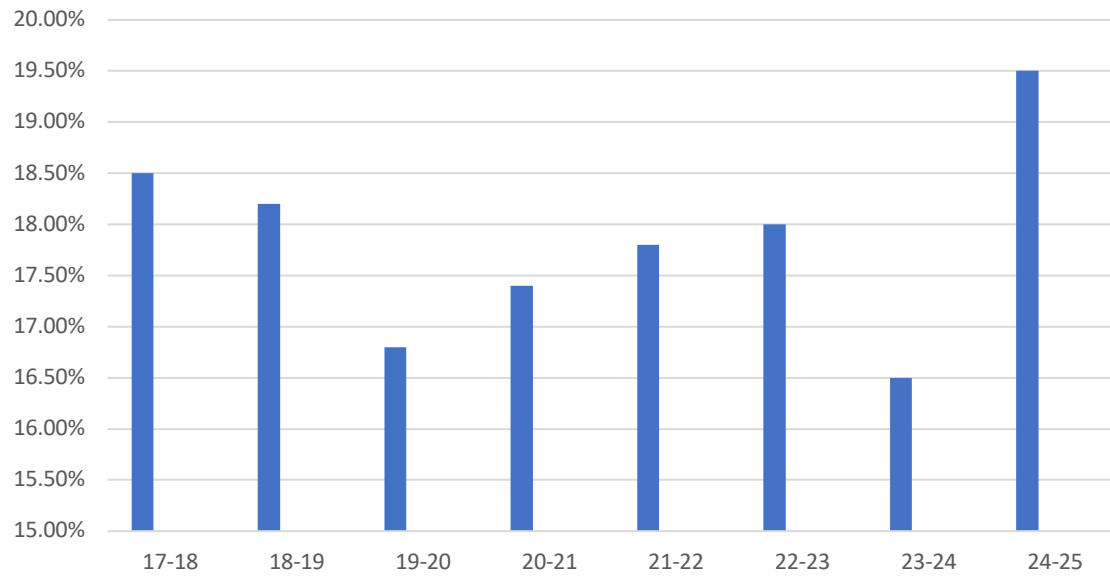
Student Background



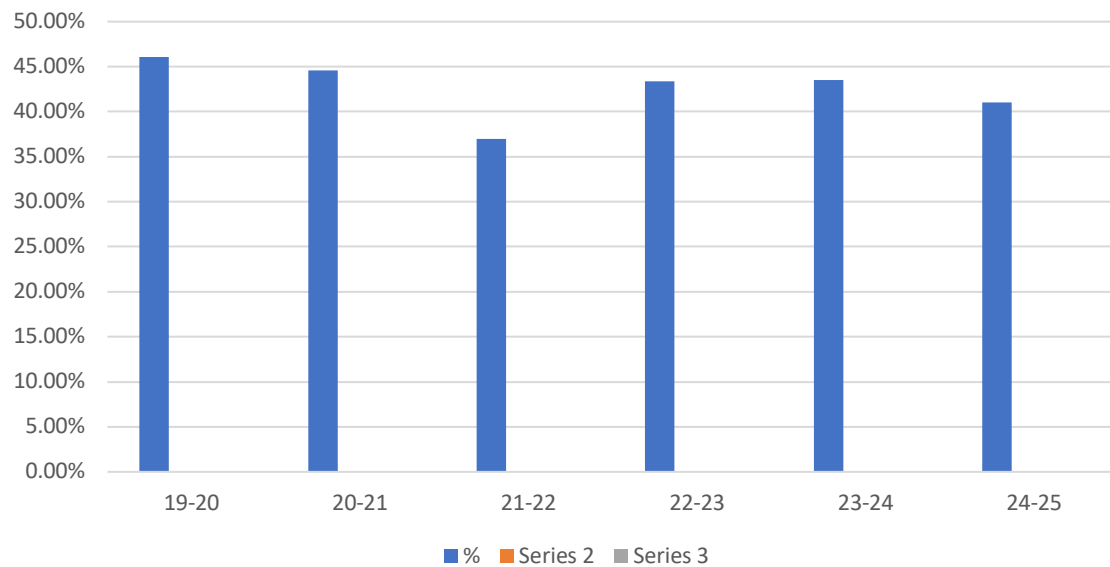
High Ability Students



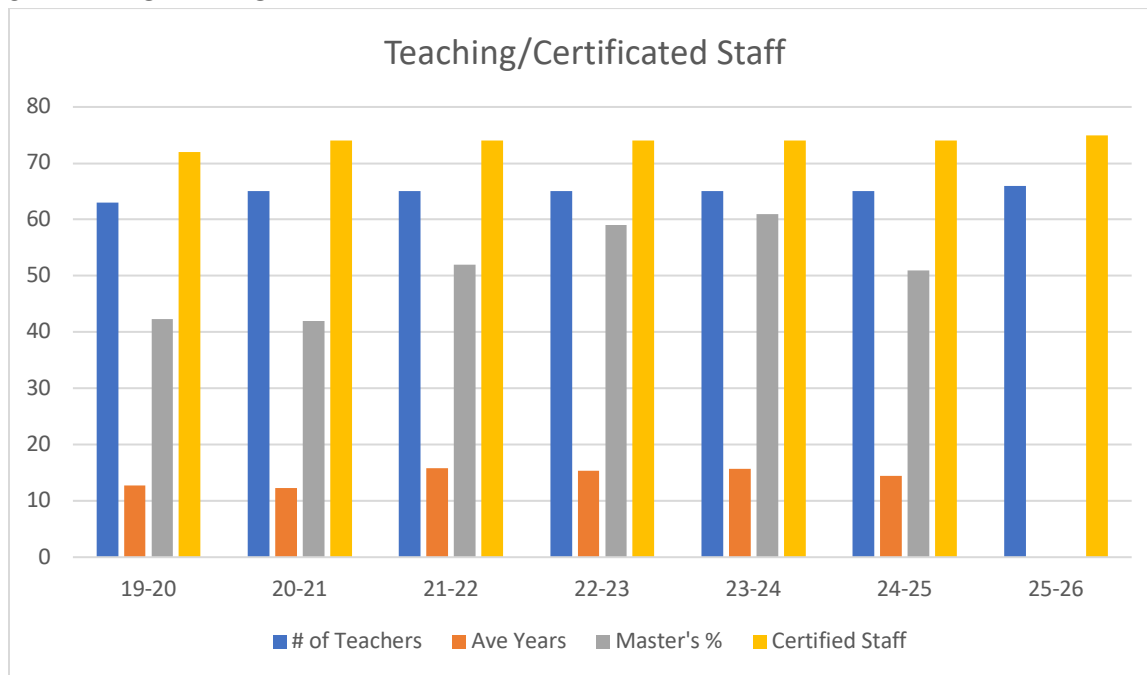
Special Education Student Percentage



Free & Reduced Student Population



STAFF INFORMATION



GRADUATION REQUIREMENTS

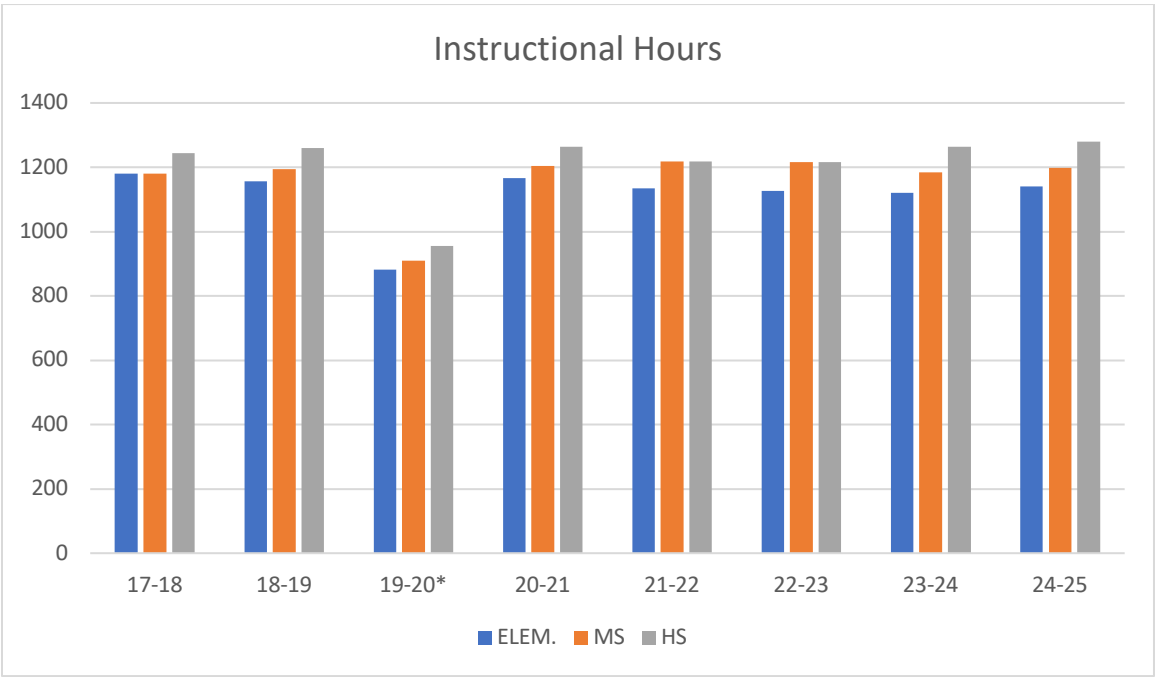
To participate in commencement exercises or receive a Central City Public Schools diploma a student must fully complete all requirements for graduation prior to the official commencement exercises, and complete other administrative requirements or conditions. The Principal may make allowances for students to participate in commencement exercises at his/her discretion.

To be eligible for graduation from Central City High School, a student must have earned a minimum of 230 semester hours credit in grades 9 through 12 inclusive. Credit hours will be computed in accordance with the Nebraska Department of Education

Satisfactory completion of the following courses must be presented in the candidate's record:

English	40 credits	Art, Music, Comm	5 credits
Science	30 credits	Computers	10 credits
Social Studies	30 credits	Mathematics	30 credits
Physical Education	5 credits		
Health	5 credits		
Career and Tech Ed	20 credits		
Personal Finance (11 th grade)	5 credits		

INSTRUCTIONAL TIME



*COVID year

ACADEMIC

NWEA MAP SCORES

CUMULATIVE MAPS DATA									
Location	9 th	10 th	11 th	12 th	9 th	10 th	11 th	12 th	
Fall 14	151.3	197	205.9	211.4	211.4	211	226.3	222.2	229.6
Fall 15	156.4	196.8	204.1	211.8	214.2	219.4	226.9	227.5	228.4
Fall 16	168.7	199.8	205.3	210.4	216.2	222.8	223.7	227.6	231.8
Fall 17	155.1	196.7	197.2	204	210.1	216.9	223.2	225.2	224
Fall 18	157.8	203.6	205.2	210.5	215.4	217.9	214.8	229.3	225.4
Fall 19	151.1	202.4	206.4	212.1	214	212.6	221.6	229.5	232.1
Fall 20	152.5	202.6	201	211.1	211.9	215.6	221.1	224.6	228.8
Fall 21	153.1	200.4	203.1	211	211.4	218.9	225.7	221.9	224.4
Fall 22	165.4	211.4	206.4	209.2	216.4	217.2	221.6	226.6	224.8
Fall 23	158.2	205.4	208.2	214.5	218.6	224.2	224.2	226.2	227.2
Fall 24	154.6	198.8	205.3	211.2	215.1	218	224	226.1	226
National	156.2	196.2	204.5	210.2	214.2	219	218.8	221.4	222.4
Winter 18	156.6	201.2	210.6	213.7	215.2	224.5	226.9	227.1	229.5
Winter 19	156.1	207.4	212.5	215.2	219.4	224.2	228.4	229.3	227.6
Winter 20	155.4	206.2	212.9	215.4	219.2	222.2	223.2	231.2	232.9
Winter 21	158.8	203.6	211.1	215.6	220.8	221.4	221.4	223.9	230.8
Winter 22	160.2	201.6	207.9	216.2	218	220.5	226.1	222.5	226.9
Winter 23	157.5	205.2	211.4	215.9	217.1	220.1	222.4	227.2	223.7
Winter 24	200.3	203.8	211.9	218.4	219.8	223.2	222.6	224.5	228.8
Winter 25	193.2	211.8	211.1	216	220.2	222.4	224.5	224.1	230.8
National	153.9	202.1	209.1	211.8	217.1	220.5	220.5	222.4	224.4
Language Usage									
Fall 14	182.3	196.2	200.8	211.4	211	232.9	214.9	223.2	228.1
Fall 15	188.4	195.8	202.9	211.4	213.1	218.1	224.1	226.4	229.4
Fall 16	196.1	198.1	205.6	208.8	214.4	220.2	221.2	225.2	228.2
Fall 17	188.9	197.2	197.3	205.1	210.5	216.1	226.2	224.9	228.7
Fall 18	154.1	202.4	202.6	208.4	213.5	212.1	224.8	229.4	227.8
Fall 19	152.2	202.4	207	211.5	213.2	218.5	222.9	222.2	223.8
Fall 20	153.3	203.5	202.9	209.8	214.8	220	223.8	223.4	228.6
Fall 21	155.2	201.6	205.3	211.2	213.6	221.2	224.5	224.8	225.1
Fall 22	151.6	204.6	207.3	210.2	215.2	218.1	225.2	226.2	225.9
Fall 23	157.4	198.8	203.4	211.1	216.2	221.4	222.2	224.8	231.2
Fall 24	181	206.4	212.2	212	212.4	214.4	226.2	227.4	227.4
National	187.7	197.1	204.2	209.4	212.4	215.2	216.6	218.7	220.4
Winter 18	158.1	203.2	208.7	212.2	216.4	223.2	226.2	226.6	228.8
Winter 19	201.4	203.2	211.2	215.2	224.5	222.4	221	229.4	229.4
Winter 20	159	207.9	211.4	211.8	220	221.6	225.2	221.1	231.6
Winter 21	201.2	206.4	210.2	211.4	217.2	222	221.4	224.2	230.6
Winter 22	201.5	206.2	209.4	216.2	215.4	221.2	221.5	224.4	228.2
Winter 23	199.5	209.2	212.3	215.4	220.1	222.2	222.9	221.1	227.4
Winter 24	198	207.6	211.4	218.8	211.6	226.1	225.2	224.6	231.8
Winter 25	204.4	202.2	211.4	218.4	220.6	225.5	226.2	226.6	225
National	195.1	202.9	208.4	212.8	215.3	217.7	218.2	220.2	221.9
Math									
Fall 14	186.8	202	209.4	216.8	220	224.7	221.4	226.6	231.5
Fall 15	185.2	201.2	209.2	216.8	220	224.7	221.4	226.6	231.5
Fall 16	188.5	203.2	212.7	217.5	224.8	228.5	223.6	225.8	230.1
Fall 17	189.8	200.1	200.2	210.9	217.6	221.8	217.8	217.2	242.4
Fall 18**	188.7	201.4	208	213.8	220.7	226.1	216.5	216.2	241.4
Fall 19	190.3	201.9	211	216.8	221.3	223.4	221.4	221.9	246.4
Fall 20	187.2	198.8	205.7	214.3	221	220.5	221.4	221	232.8
Fall 21	151.8	204.1	202.1	216.4	220.5	221	216.1	215.2	238.9
Fall 22	187.1	203.1	212.9	213.2	221.1	228.1	221	220.2	239.4
Fall 23**	182	198.1	202.4	211	211.4	222.4	217.2	214.4	231.4
Fall 24	189	200.4	207.7	218.2	226.2	226.2	227	228.4	239.4
National	188.5	199.5	209.1	214.7	220.2	224.9	226.3	229.1	231.7
Winter 18	197.6	204.2	214.4	220.7	227.4	234.2	228	230.2	244.4
Winter 19	150.5	218.9	216.1	220.6	228.2	223.9	221.9	223.1	242.9
Winter 20	154.2	208.2	212.6	222.7	224.1	224.4	226.2	224.8	245
Winter 21	157.6	205	212.8	219	228.1	224.6	225.8	226.2	243.6
Winter 22	154.5	206.2	214.4	221.8	222.5	221.6	225.9	225	241.4
Winter 23	156.8	208.4	210.2	221.2	229.2	221.8	221.6	223.2	239.8
Winter 24	200.8	209.2	212.3	222.2	226.4	223.2	226.7	228.2	244.6
Winter 25	202.5	211.1	214.9	226.6	213.4	235.4	228.8	221.9	241.9
National	186.2	206.1	214.7	219.9	224	228.1	228.7	231.2	233.6

** = After one complete year of MyMath (Seven yrs).

*** Annual Math

PRE-ACT, ACT, NSCAS

	<u>2019-2020</u>	<u>2020-2021</u>	<u>2021-2022</u>	<u>2022-2023</u>	<u>2023-2024</u>	<u>2024-2025</u>	<u>State Ave</u>
PRE-ACT	18.2	18	16.5	18.8	19.1	18.9	17.7
ACT	19.0	19.6	19.4	18.2	21.2	19.2	20.1

ACTIVITIES REPORT

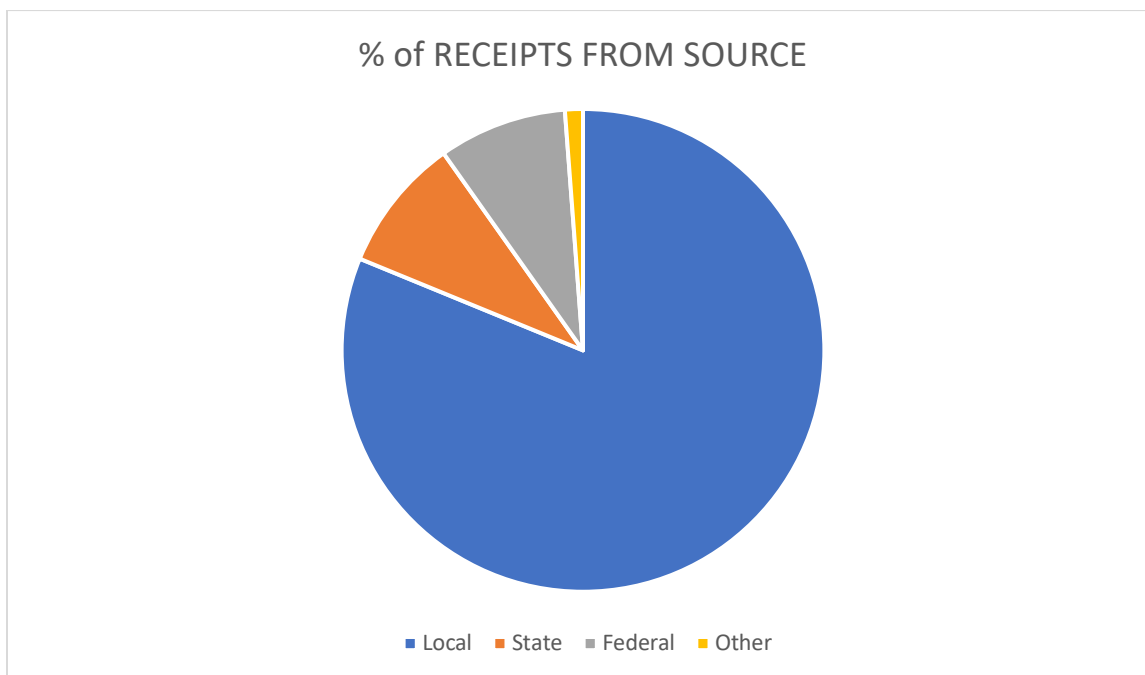
Over 98% of Central City Public School High School students participate in at least one activity.

<u>Sports</u>	<u>Activities</u>
B/G Cross Country	Band
Volleyball	Pep Band
Football	Jazz Band
Softball	Choir
B/G Basketball	Show Choir
B/G Wrestling	Musical
B/G Track	One Act
Baseball	Speech
B/G Golf	FFA
Dance	DECA
Cheer	Skills USA
	National Honor Society
	Leadership/Student Council
	Quiz Bowl
	Science Research Club
	Yearbook
	Fishing Club

FINANCIAL REPORT

	<u>18-19</u>	<u>20-21</u>	<u>21-22</u>	<u>22-23</u>	<u>23-24</u>	<u>24-25</u>
Tax Asking	\$9,820,000	\$9,705,000	\$9,940,000	\$10,270,000	\$9,880,000	\$10,130,000
Total Levy	\$.9919	\$1.0058	\$1.0057	\$0.9723	\$0.8575	\$0.78719
Expenditures	\$10,849,105	\$11,599,914	\$11,772,130	\$12,141,739	12,721,298	****
Per Pupil Cost	\$17,181	\$18,173	\$18,635	\$19,361	\$19,733	****

*Total Tax Asking Increase from 2016-2017 = 6% (0.8% per year average)



ADMINISTRATION

Jeff Jensen – Superintendent/5-6 Principal

Holee Hanke – 7-12 Principal

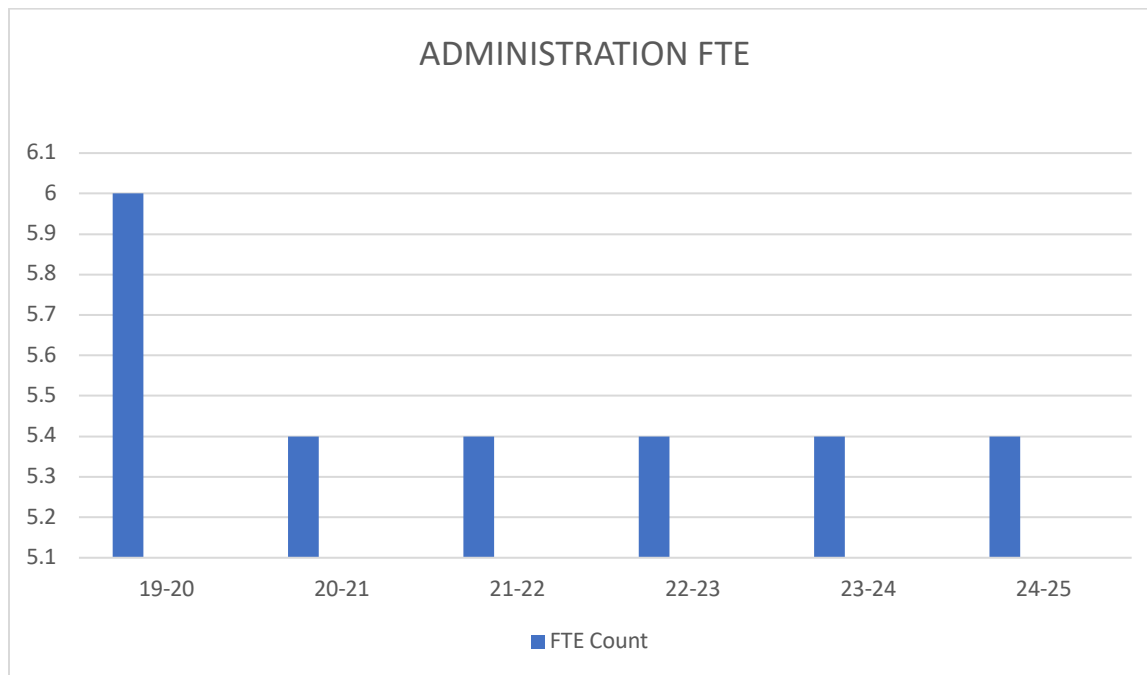
Justin Anderson – 7-12 Assistant Principal/Activities Director

Zach Springer – 7-12 Dean of Students

Neely Moser – Elementary Principal

Maureen McElhinny – Special Education Director

Brandon Detlefsen – Technology Director



BOARD OF EDUCATION

Lisa Wagner – President

Dr. Brian Buhlke – Vice President

Aaron Heins – Secretary

Charles Homolka

Brent Kennedy

Brett Zikmund

ANNUAL NOTICES

NOTICE OF NON-DISCRIMINATION - The school district shall not discriminate on the basis of race, national origin, creed, age, marital status, sex, disability, religion, veteran status, pregnancy, childbirth or related medical condition, or other protected status in its educational programs, activities or employment policies in compliance with Title VI and VIII of the Civil Rights Act, Title IX (Policy 3057), the Rehabilitation Act, the Nebraska Equal Educational Opportunity Act, the Americans with Disabilities Act, and all other relevant civil rights statutes and regulations.

Any person who believes she or he has been discriminated against, denied a benefit, or excluded from participation in any district education program or activity may file a grievance using the district's grievance procedures.

Inquiries regarding compliance with Title IX, the Nebraska Equal Opportunity in Education Act, Section 504, or Title VII may be directed to the superintendent.

DESIGNATION OF COORDINATORS - Any person having concerns or needing information about the District's compliance with anti-discrimination laws or policies should contact the District's designated Coordinator for the applicable anti-discrimination law.

Law, Policy or Program	Issue or Concern	Superintendent
Title VI	Discrimination or harassment based on race, color, or national origin; harassment	Superintendent
Title IX	Discrimination or harassment based on sex; gender equity	Activities Director
Section 504 of the Rehabilitation Act and the Americans with Disability Act (ADA)	Discrimination, harassment or reasonable accommodations of persons with disabilities	Superintendent
Homeless student laws	Children who are homeless	Superintendent
Safe and Drug Free Schools and Communities	Safe and drug free schools	High School Principal
Behavioral Awareness Point of Contact	Behavior Intervention	School Psychologist

The Coordinator may be contacted at: (308-946-3055) 1510 28th Street, Central City, NE 68826

TEACHER QUALIFICATION NOTICE - The No Child Left Behind Act gives parents/guardians the right to get information about the professional qualifications of their child's classroom teachers. Upon request, the District will give parents/guardians the following information about their child's classroom teacher:

1. Whether the teacher has met State qualifications and licensing criteria for the grade levels and subject areas in which the teacher provides instruction.
2. Whether the teacher is teaching under an emergency or provisional teaching certificate.
3. The baccalaureate degree major of the teacher. You may also get information about other graduate certification or degrees held by the teacher, and the field of discipline of the certification or degree. We will also, upon request, tell parents/guardians whether their child is being provided services by a paraprofessional and, if so, the qualifications of the paraprofessional. The request for information should be made to an administrator in your child's school building. The information will be provided to you in a timely manner. Finally, the District will give timely notice to you if your child has been assigned, or has been taught for four or more consecutive weeks by a teacher who does not meet the requirements of the Act.

SPECIAL EDUCATION CHILD FIND - The Central City Public Schools asks you to assist us in our "Nebraska Child Find" efforts. This is an ongoing statewide search for all unserved children with disabilities, ages birth through 21.

If you know of a child who is experiencing difficulties with motor development, speech and language, vision, hearing or learning, please refer the parent to the number below. The Central City Public Schools District will provide an educational evaluation at no cost to the parent. If the child qualifies under Nebraska law, a free and appropriate educational program will be developed to meet his/her educational needs.

To contact us, please call SPED Director at 308-946-3057. You may also contact Nebraska Child find at (888) 806-6287.