

Tiny Bison Preschool

Nov. 20th-21st

Letter of the Week: Review
 Color of the Week: Review
 Shape of the Week: Review

School Readiness

Children will use an increasing vocabulary to express thoughts and needs through words and gestures, following social and conversational rules.

Please do not park in the area between the two crosswalks in front of the school at any time before, during, or after school. This is a safety hazard, as motorists cannot see pedestrians who cross. Parents also please use the crosswalks when walking your children into the school. It is very dangerous crossing when buses and other cars are coming into and leaving the school. It's important to set a safe example for our students.

	<u>Monday</u>	<u>Tuesday</u>
<u>Breakfast</u>	PBJ Sandwich, Peaches	Cereal, Mixed Fruit
<u>Lunch</u>	Pizza, Peas, Apple	Super Nachos, Carrots, Mandarin Oranges
<u>Snack</u>	Little Graham Squares	Chocolate Elf Grahams



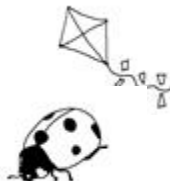
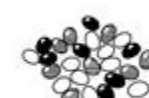
Glue Activity



Sponge Paint



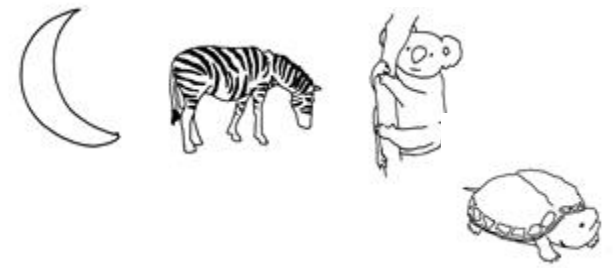
Call and find out what you can do to volunteer. We are always looking for classroom and bus volunteers. Come spend a day with your child at school!





Tiny Bison Preschool

Nov. 20th-21st



Nov. 22nd-24th - No School

Nov. 28th - Parent Meeting at 6:30

Dec. 4th - No School (Monday early dismissal)

Dec. 8th - We have school (Friday)



- Soft Touches
- Walk Inside
- Quiet Voices

PLEASE, REMEMBER...



to return your
inhome inkind.

